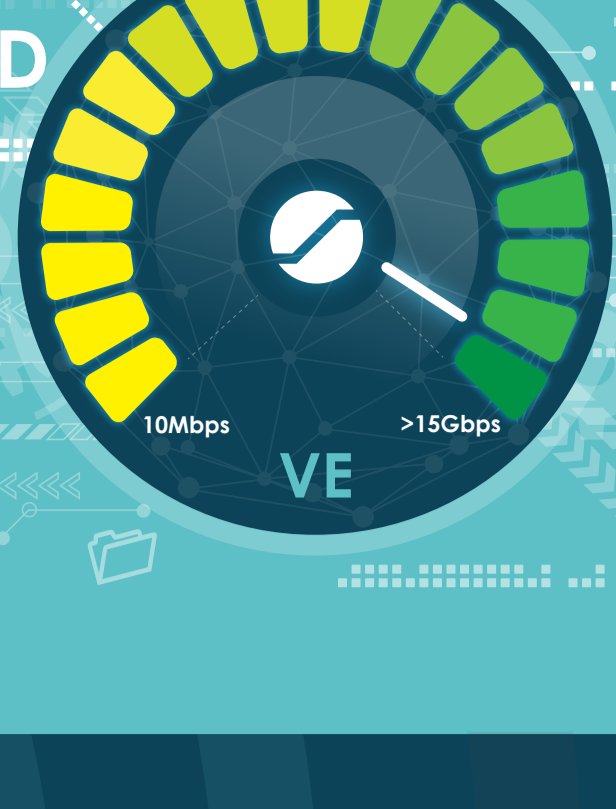


SENETAS CV1000 15GBPS VIRTUALISED ENCRYPTION

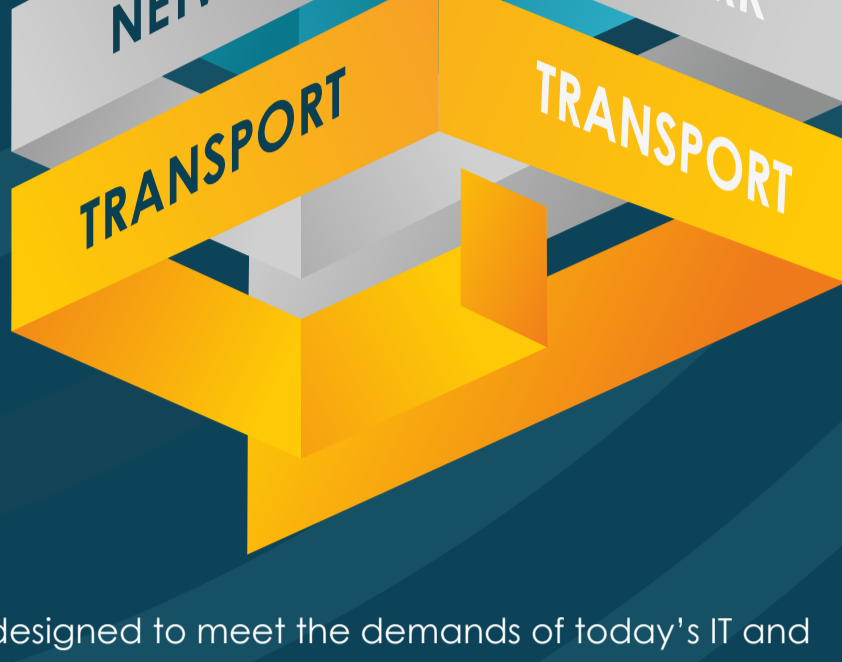
The crypto-agile Virtualised Network Function designed for large-scale, virtualised WAN encryption.



Network Independent Encryption

The optimal application of the CV1000 is data protection across large-scale virtualised WAN environments, all the way to the virtual edge.

The CV1000 provides concurrent, policy-based encryption for today's Ethernet and Internet protocol networks (Layers 2, 3 and 4).



The CV1000 is designed to meet the demands of today's IT and data network managers:



SCALABILITY



SIMPLICITY



FLEXIBILITY



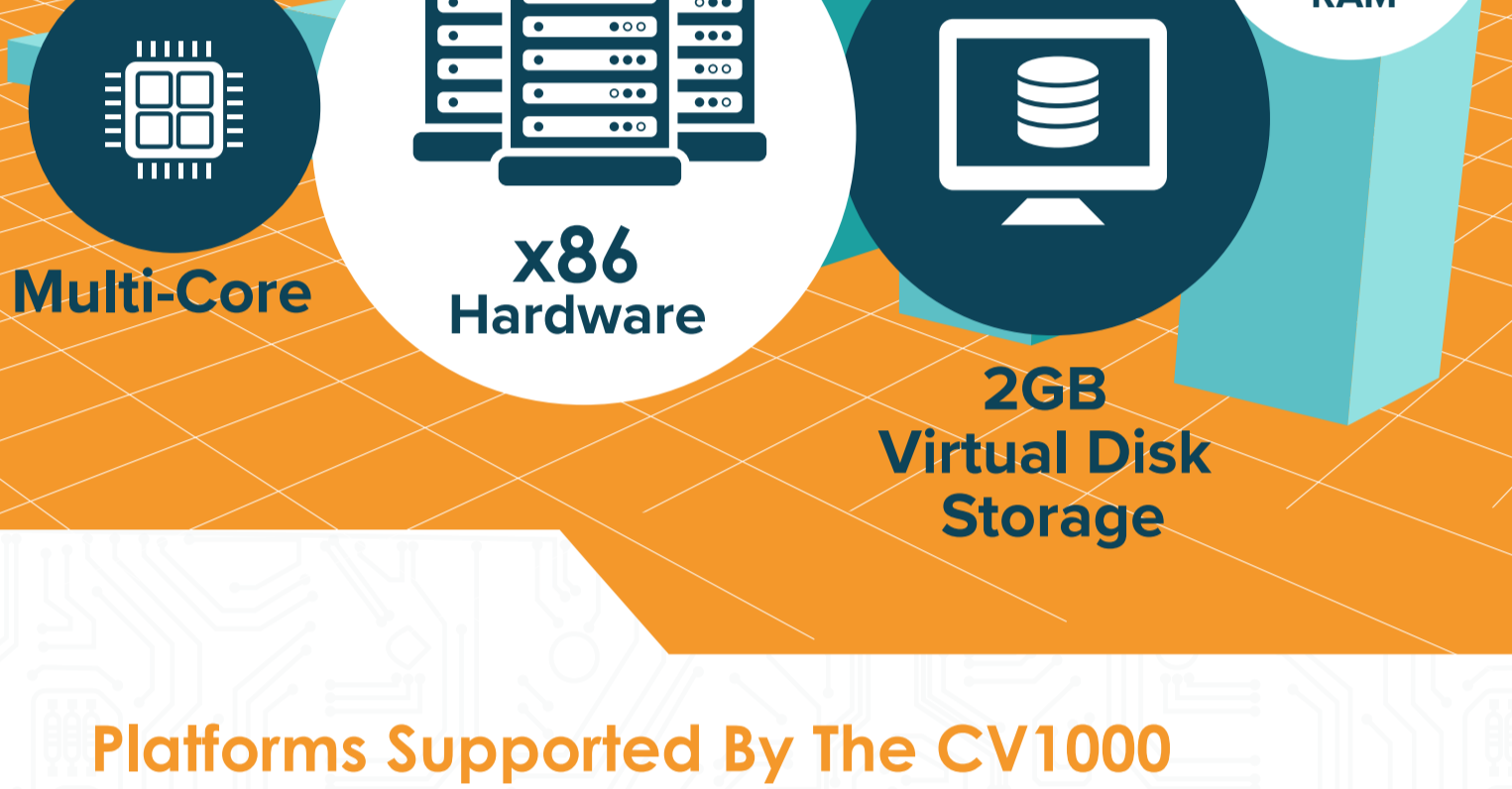
EFFICIENCY

CV1000 Implementation

The CV1000 is a guest virtual machine that runs on industry standard x86 hosts and hypervisors.

+ DPDK (acceleration) for up to 15Gbps performance

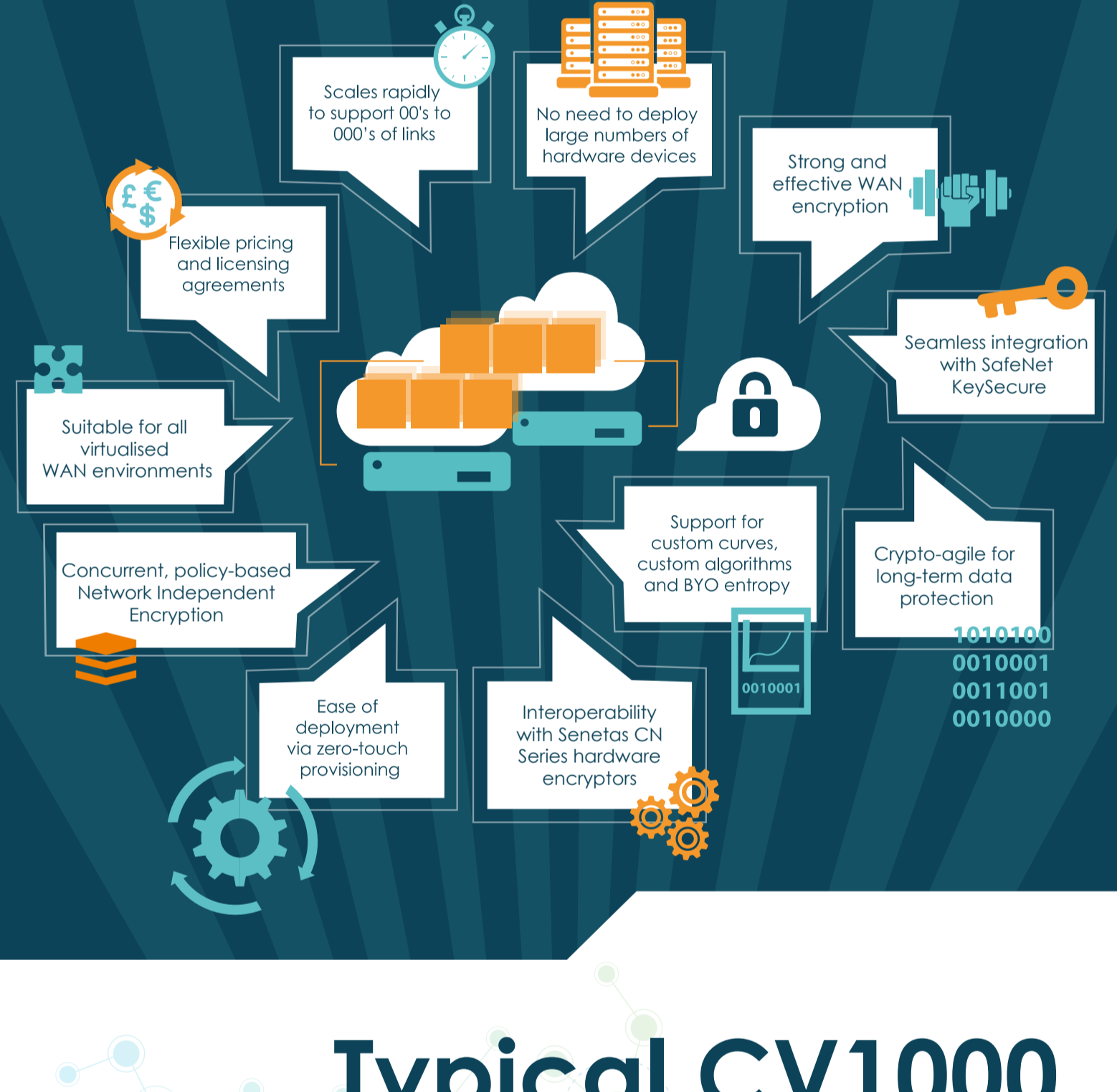
Performance is dependent upon host configuration. Minimum recommended:



Platforms Supported By The CV1000

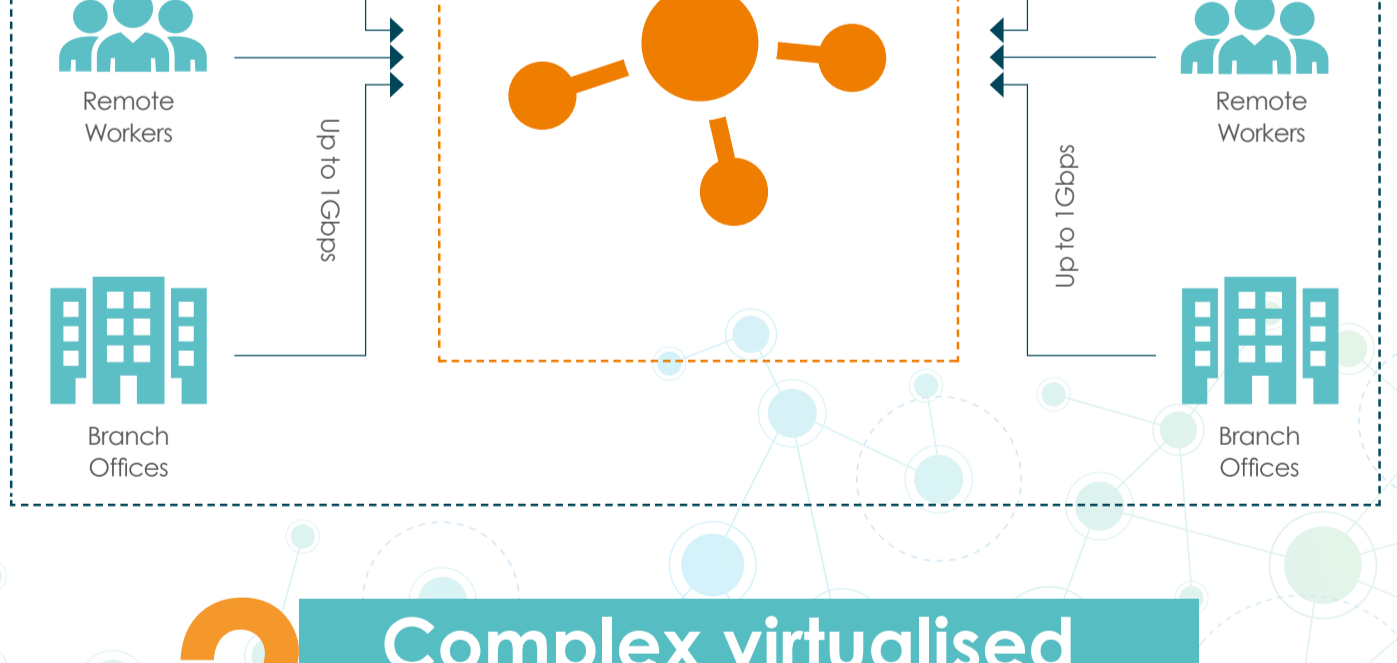


Key Features

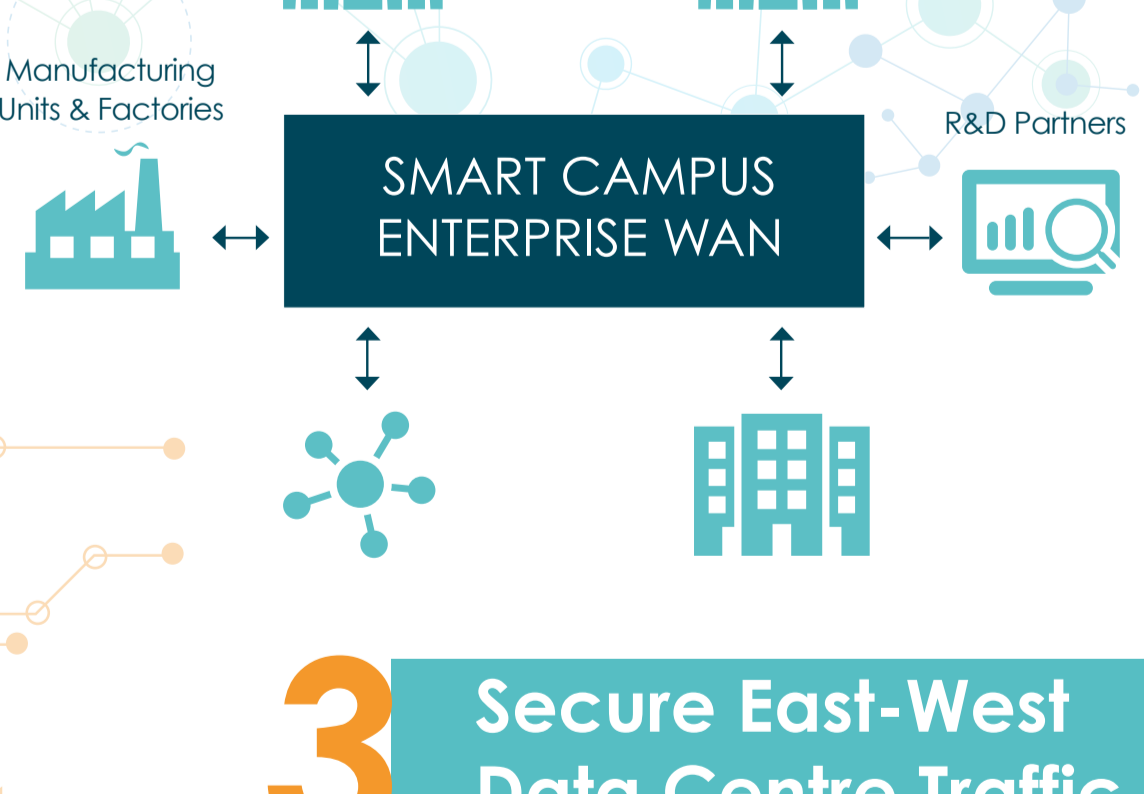


Typical CV1000 Use-Cases

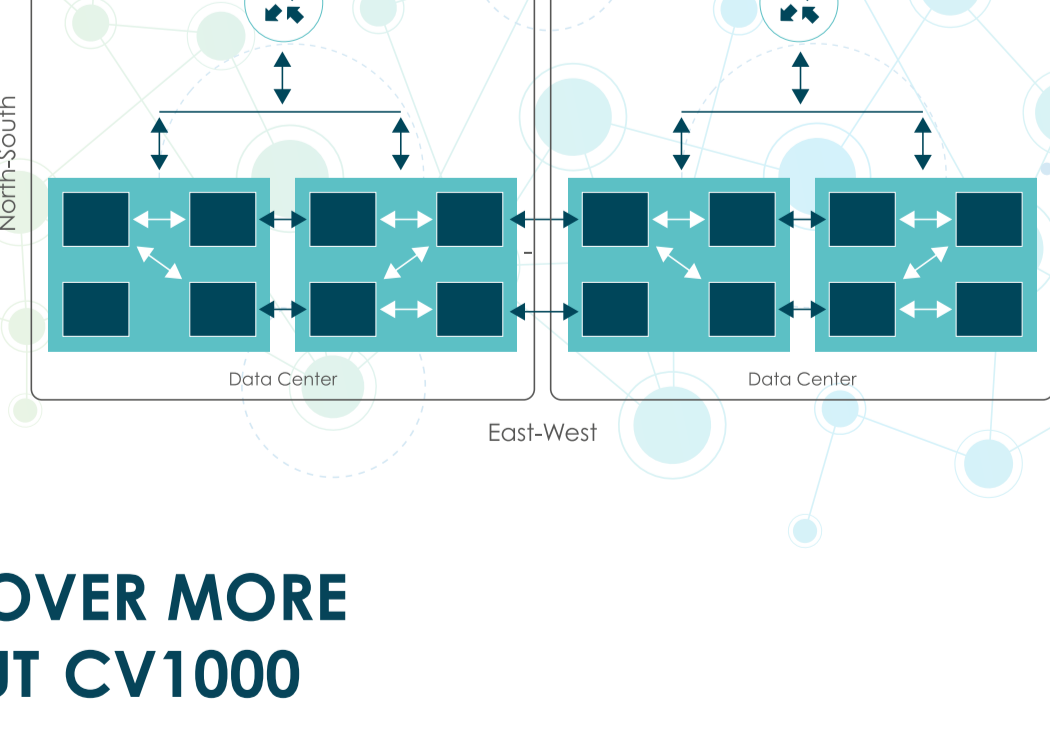
1 Large-Scale WAN Deployments



2 Complex virtualised WAN environments



3 Secure East-West Data Centre Traffic



DISCOVER MORE ABOUT CV1000



CV1000 PRODUCT PAGE



CV1000 SPECIFICATIONS



PRODUCT GUIDE

Senetas encryption solutions are distributed and supported internationally (outside Australia & New Zealand) by Thales, within the US Federal Government by Thales Defense & Security Inc and across Australia and New Zealand by Senetas and its Partner Community.